

**Titus County US 271 Schedule**

**START PROJECT**

TC0001	Start Project	1	1	0	03MAR08	03MAR08
--------	---------------	---	---	---	---------	---------

**SCHEMATIC DESIGN**

TC0050	Submitted to District with Changes to US67 Area	6	6	0	04MAR08	11MAR08
TC0055	District Review	24	24	0	12MAR08	14APR08
TC0060	Revise Schematics/Submit to PTP	10	10	0	15APR08	28APR08
TC0062	Pavement Design from TxDOT	1	1	0	25JUN08	25JUN08
TC0065	Submit to District	1	1	0	26JUN08	26JUN08
TC0070	Austin Approval	20	20	0	26JUN08	24JUL08

**PS&E DESIGN**

**PS&E INITIAL SET**

TC0120	Revise Per District Comments	39	39	0	04MAR08	25APR08
TC0125	PTP/3rd Party Engineering Review	10	10	0	28APR08	09MAY08
TC0130	Address Review Comments	34	34	0	12MAY08	27JUN08
TC0170	Update Bridge Layouts Per Geotech Report.	9	9	0	15JUL08	25JUL08
TC0172	Resubmit 30% to 3rd Party Engineering Review	11	11	0	28JUL08	11AUG08
TC0173	Address Review comments	10	10	0	12AUG08	25AUG08
TC0175	PTP Submittal to District and Contractor	1	1	0	26AUG08	26AUG08
TC0180	Contractor Review & Pricing	16	16	0	27AUG08	18SEP08
TC0182	District Review	22	22	0	27AUG08	26SEP08

**GEOTECHNICAL ENGINEERING**

TC0135	Contract with Geotech Contractor	58	58	0	01APR08	20JUN08
TC0140	Geotech Onsite	14	14	0	23JUN08	11JUL08
TC0165	Receive Geotech Report	1	1	0	14JUL08	14JUL08

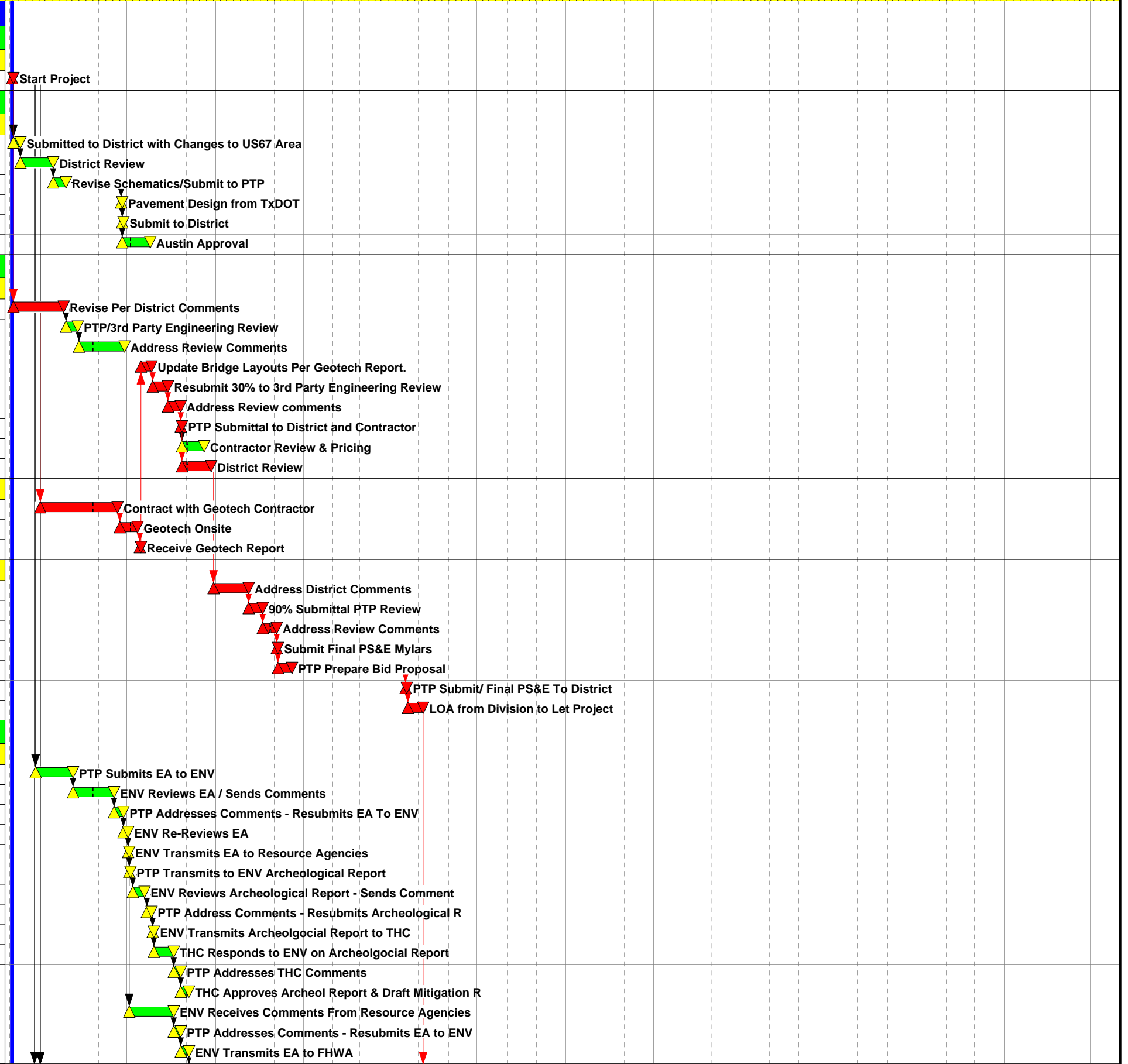
**PS&E - FINAL SET**

TC0185	Address District Comments	27	27	0	29SEP08	04NOV08
TC0190	90% Submittal PTP Review	10	10	0	05NOV08	18NOV08
TC0195	Address Review Comments	10	10	0	19NOV08	03DEC08
TC0200	Submit Final PS&E Mylars	1	1	0	04DEC08	04DEC08
TC0205	PTP Prepare Bid Proposal	11	11	0	05DEC08	19DEC08
TC0210	PTP Submit/ Final PS&E To District	1	1	0	17APR09	17APR09
TC0215	LOA from Division to Let Project	11	11	0	20APR09	04MAY09

**ENVIRONMENTAL**

**FINAL ENVIRONMENTAL ASSESSMENT**

TC0275	PTP Submits EA to ENV	27	27	0	28MAR08	05MAY08
TC0285	ENV Reviews EA / Sends Comments	29	29	0	06MAY08	16JUN08
TC0290	PTP Addresses Comments - Resubmits EA To ENV	8	8	0	17JUN08	26JUN08
TC0293	ENV Re-Reviews EA	3	3	0	27JUN08	01JUL08
TC0295	ENV Transmits EA to Resource Agencies	1	1	0	02JUL08	02JUL08
TC0300	PTP Transmits to ENV Archeological Report	1	1	0	03JUL08	03JUL08
TC0305	ENV Reviews Archeological Report - Sends Comment	10	10	0	07JUL08	18JUL08
TC0310	PTP Address Comments - Resubmits Archeological R	5	5	0	21JUL08	25JUL08
TC0315	ENV Transmits Archeolgocial Report to THC	1	1	0	28JUL08	28JUL08
TC0320	THC Responds to ENV on Archeolgocial Report	15	15	0	29JUL08	18AUG08
TC0325	PTP Addresses THC Comments	5	5	0	19AUG08	25AUG08
TC0330	THC Approves Archeol Report & Draft Mitigation R	5	5	0	26AUG08	02SEP08
TC0335	ENV Receives Comments From Resource Agencies	47	47	0	03JUL08	18AUG08
TC0340	PTP Addresses Comments - Resubmits EA to ENV	5	5	0	19AUG08	25AUG08
TC0345	ENV Transmits EA to FHWA	5	5	0	26AUG08	02SEP08



Start Date: 03MAR08  
 Finish Date: 15MAR11  
 Data Date: 03MAR08  
 Run Date: 25JUN08 15:31

Legend:  
 - Green bar: Early Bar  
 - Blue bar: Progress Bar  
 - Red bar: Critical Activity

TCRP

Pate Transportation Partners

Titus County US 271 Schedule

Classic Schedule Layout

Sheet 1 of 2

Date	Revision	Checked	Approved

Activity ID	Activity Description	Orig Dur	Rem Dur	%	Early Start	Early Finish
TC0350	FHWA Reviews EA / Sends Comments to ENV	31	31	0	03SEP08	15OCT08
TC0355	ENV Transmits Comments to PTP	1	1	0	15OCT08	15OCT08
TC0360	PTP Addresses Comments - Resubmits EA to ENV	5	5	0	16OCT08	22OCT08
TC0365	ENV Transmits Responses to Comments EA to FHWA	2	2	0	23OCT08	24OCT08
TC0370	FHWA issues Notice to Proceed to P. I.	6	6	0	27OCT08	03NOV08
TC0375	PTP Schedules - Public Hearing	26	26	0	04NOV08	10DEC08
TC0380	PTP Transmits ENV Results of PI & Requests FONSI	11	11	0	11DEC08	29DEC08
TC0385	ENV Transmits to FHWA Results of PI & Req FONSI	1	1	0	30DEC08	30DEC08
TC0390	FHWA Issues FONSI	12	12	0	31DEC08	15JAN09

**RAILROAD AGREEMENTS**

TC0900	Prepare Exhibit A (Includes Drainage Report, etc	66	66	0	27MAR08	27JUN08
TC0905	Submit Draft Exhibit A to PTP (Includes LOA)	1	1	0	30JUN08	30JUN08
TC0910	PTP Review	6	6	0	01JUL08	09JUL08
TC0915	Revise Exhibit A	5	5	0	10JUL08	16JUL08
TC0920	Submit Exhibit A to Railroad	1	1	0	17JUL08	17JUL08
TC0925	Railroad Review Exhibit A	65	65	0	18JUL08	17OCT08
TC0930	Railroad Approve Exhibit A	1	1	0	20OCT08	20OCT08
TC0935	Negotiate Agreement, Prepare Draft by Railroad	68	68	0	21OCT08	27JAN09
TC0940	Agreement Approved	1	1	0	28JAN09	28JAN09

**RIGHT - OF - WAY**

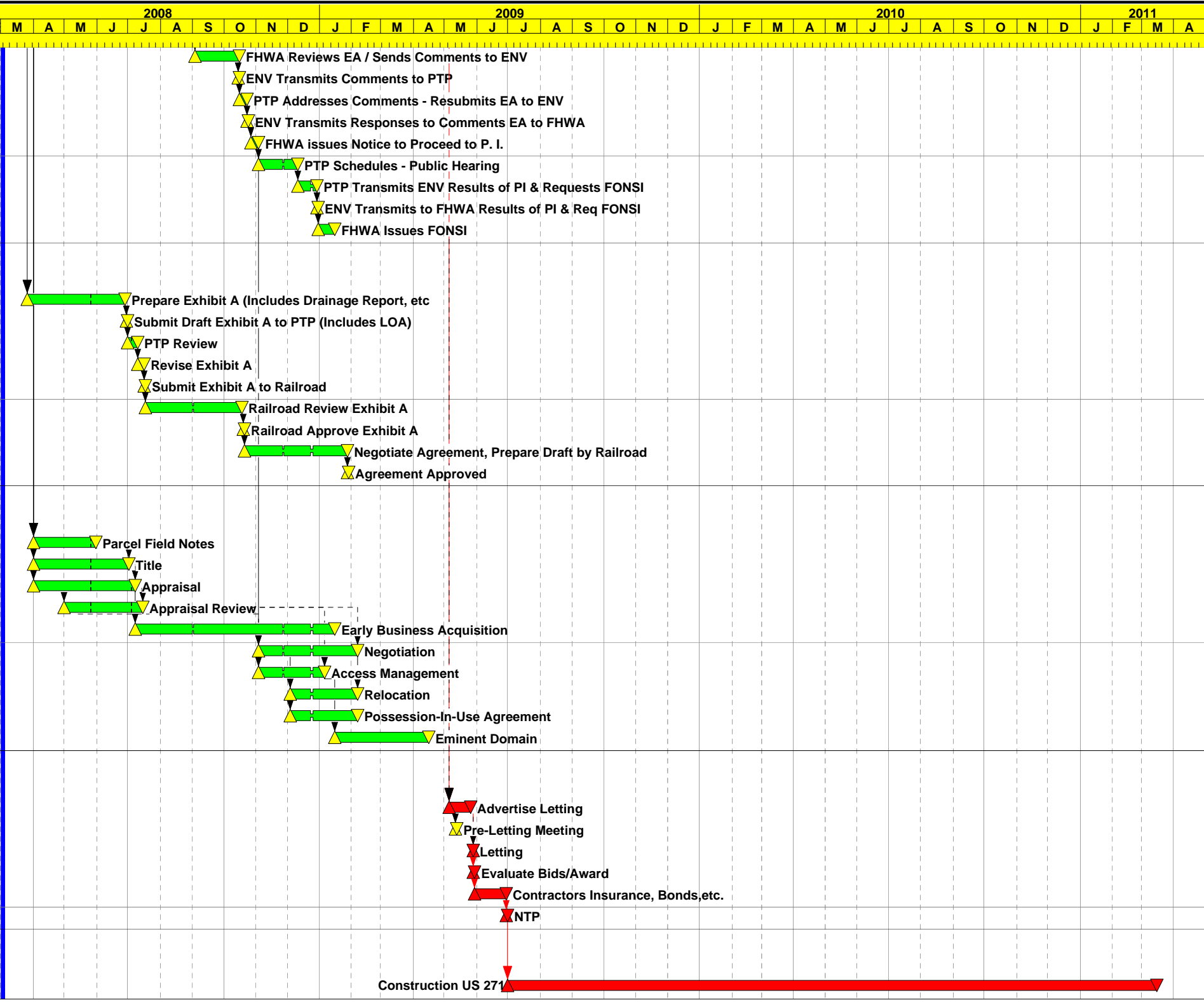
TC0006	Parcel Field Notes	43	43	0	01APR08	30MAY08
TC0011	Title	65	65	0	01APR08	01JUL08
TC0016	Appraisal	68	68	0	01APR08	07JUL08
TC0021	Appraisal Review	51	51	0	01MAY08	14JUL08
TC0023	Early Business Acquisition	134	134	0	08JUL08	15JAN09
TC0026	Negotiation	65	65	0	04NOV08	05FEB09
TC0031	Access Management	42	42	0	04NOV08	05JAN09
TC0036	Relocation	44	44	0	04DEC08	05FEB09
TC0039	Possession-In-Use Agreement	44	44	0	04DEC08	05FEB09
TC0041	Eminent Domain	64	64	0	16JAN09	15APR09

**CONTRACT**

TC0250	Advertise Letting	15	15	0	05MAY09	25MAY09
TC0255	Pre-Letting Meeting	1	1	0	12MAY09	12MAY09
TC0260	Letting	1	1	0	28MAY09	28MAY09
TC0265	Evaluate Bids/Award	1	1	0	29MAY09	29MAY09
TC0270	Contractors Insurance, Bonds,etc.	30	30	0	30MAY09	28JUN09
TC0272	NTP	1	1	0	29JUN09	29JUN09

**CONSTRUCTION**

TC0600	Construction US 271	446	446	0	30JUN09	15MAR11
--------	---------------------	-----	-----	---	---------	---------



Start Date	03MAR08	▲	▲	Early Bar
Finish Date	15MAR11	▼	▼	Progress Bar
Data Date	03MAR08	▲	▲	Critical Activity
Run Date	25JUN08 15:31	▲	▲	

TCRP	
------	--

Pate Transportation Partners  
 Titus County US 271 Schedule  
 Classic Schedule Layout

Date	Revision	Checked	Approved